

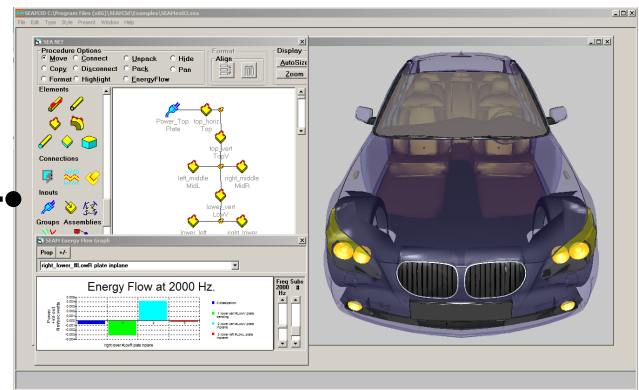
# seam

vibro-acoustic design software



***BMW has successfully integrated SEAM as their tool to support concept studies at the very earliest stages of the design cycle.***

The flexibility of SEAM to quickly generate answers to planned or proposed changes of materials, properties, sound package, damping treatments, and construction details is a powerful and useful CAE tool at a stage of the vehicle development process where FEA and CAE models are not finalized enough to be useful, and where prototype hardware is not yet available to measure. The software is not used to replace measurement, but serves a very useful role in the early design phase and reduces the need for testing later in the cycle.



SEAM is used effectively in the preliminary design phase at an assembly level, where a more detailed model is used and component-level responses are predicted and used to compare to or to set component level targets for the vehicle. The overall effect of this component-level change can also be seen in the full-vehicle model, where the sensitivity of the passenger ear locations to the proposed changes can be determined to show the relevance



||| Cambridge Collaborative

Cambridge Collaborative, Inc.  
47 Lowell Road  
Concord, MA 01742 USA  
Phone: +1.617.876.5777  
www.ccinc.com : Info@ccinc.com