



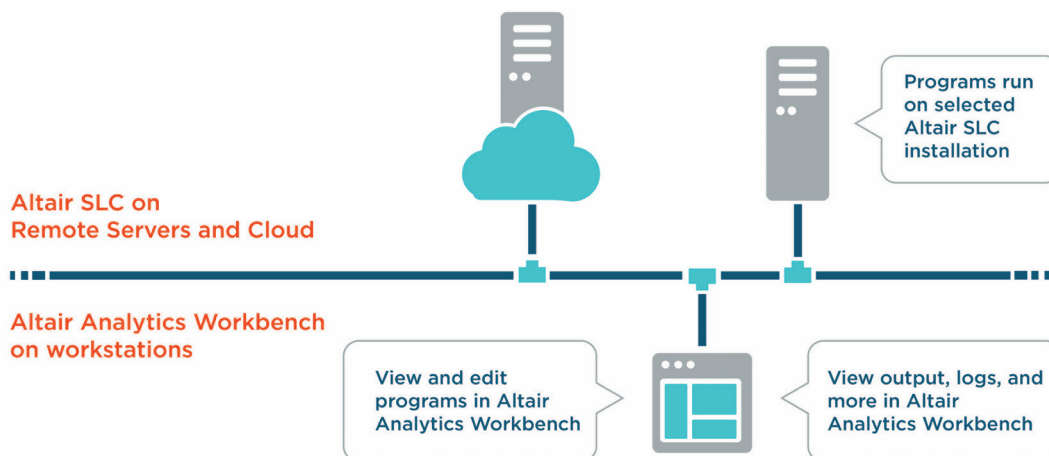
ALTAIR SLC LINK™

Local Workbench, Remote Servers

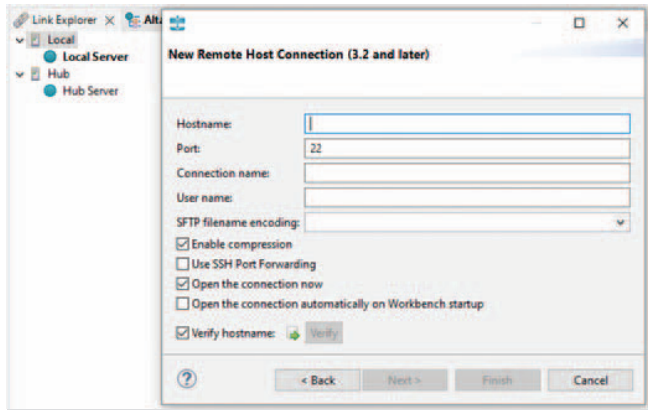
[Altair SLC](#) link can run programs from [Altair Analytics Workbench™](#) remotely on a server or in the cloud. You can view and manipulate outputs, datasets, logs, and more in Analytics Workbench as if the workloads had been executed locally. This is ideal in an enterprise concerned with security, scalability, and manageability because data doesn't have to leave the data center and analysts benefit from being able to access powerful analytics with an advanced local user interface. The system creates connections with strong, resilient, and industry-standard encryption systems.

Additionally, you can install Analytics Workbench on a completely different platform than the linked Altair SLC servers. For example, you may have a local installation of Analytics Workbench on a Windows workstation linked to a Linux server. You can even use Analytics Workbench installed on a server to link it to other remote servers.

SAS language programs will automatically use this feature when connecting to a remote server.



Altair SLC Link operates over an SSH (Secure Shell) connection and provides connectivity between installations of Altair Analytics Workbench and remote installations of Altair SLC on all common server platforms except z/OS.



Remote host connections enable you to access a remote host's file system using the File Explorer view and link to a remote instance of Altair SLC to run workflows and/or SAS language programs.

Benefits

Using Altair SLC link technology means:

- Desktop or laptop computers can use Altair SLC installations on more powerful servers;
- Desktops can leverage the power of Altair SLC installations on a cloud, grid, or cluster of computers;
- Analytics Workbench users can run multiple programs simultaneously across multiple linked servers;
- It is possible to develop and run programs without data leaving a data center with enhanced security;
- Different sites within a company can access and share server resources.

Dependencies and Usage

Altair SLC link enables connectivity between Analytics Workbench installations and remote Altair SLC installations on these server platforms:

Platform
AIX on IBM Power
Linux on ARM
Linux on IBM Power LE (Little Endian)
Linux on x86
macOS on x86
Windows on x86

Additional information:
[Click here](#) to view a complete set of documentation.

Altair: A Complete Data Analytics Portfolio

Altair gives teams the power to use data analytics and AI to gain competitive advantages and drive next-level business results:

[Artificial intelligence and machine learning](#): Our tools support code written in the SAS language, Python, R, and SQL and offer a unique visual interface for creating machine learning models without requiring users to write code.

[Data preparation](#): Access, cleanse, and format data from a wide variety of sources (including Microsoft® Excel®, CSV, PDF, TXT, JSON, XML, HTML, SQL databases, big data sources like Hadoop, and more) without performing any manual data entry or coding.

[Stream processing and data visualization](#): Connect directly to streamed sensor data from MQTT, Kafka, Solace, and other message queues and build complex streaming analytics applications with a simple drag-and-drop interface. Build and publish sophisticated real-time dashboards without writing any code.